

2023 AUSTRALIAN LIVEABILITY CENSUS **CITY OF BUSSELTON**

EXECUTIVE SUMMARY REPORT

City of Busselton participated as a Distribution Council in the 2023 Australian Liveability Census (26 March - 30 June 2023).

This report provides a high level summary of the results from residents of Busselton and the rest of Australia.

This document is has been designed to be printed at A4.

© 2023 Place Score

PLACE SCORE

Suite 1, Level 5, 2-12 Foveaux St,
Surry Hills 2010, NSW Australia
placescore.org

ABN 19 610 823 286

T: +61 2 8065 7401

E: kylie@placescore.org

We pay our respects to the traditional owners of this land, their Elders past, present and emerging, and acknowledge the continued rich culture and heritage of all Aboriginal people on this land.

2023 Australian Liveability Census

THE AUSTRALIAN LIVEABILITY CENSUS

Liveability is something that we all want to achieve for our communities, but historically it has also been difficult to measure and track. Liveability measurement has relied on secondary data such as health, crime and service locations, or external liveability rankings, but none of these capture what it is actually like for a community to live in their neighbourhood.

The Australian curriculum defines liveability 'as an assessment of what it is like to live in a place'. This is what the Australian Liveability Census covers. The results reveal what really matters to local communities and their priorities and ideas for making their neighbourhood better for them.

There are four categories of results:

1. COMMUNITY VALUES

Fifty neighbourhood place attributes are ranked according to how many people said they would value them in their ideal neighbourhood. Care Factor or CF data reveals where your community is in agreement and possible areas of conflict.

2. PLACE EXPERIENCE

Which place attributes contribute to or detract from liveability? Place experience or PX reveals how your community rates the lived experience of their current suburb of residence. Your PX Score is an aggregate of all the responses to produce an average liveability score for your whole area. Scores for significant attributes are included in this report.

3. STRENGTHS AND PRIORITIES

These actionable insights identify the place attributes that are highly valued and contributing positively - strengths; and those that are highly valued but performing poorly - priorities. Both may require investment, either to nurture and protect strengths or to improve what will bring the most significant benefit to the majority of your community.

4. COMMUNITY IDEAS

All respondents were also invited to share what would make their neighbourhood a better place for them to live in. These qualitative responses provide a wealth of local expertise to guide action in liveability improvements.

ACCESSING YOUR DATA

This *Executive Summary Report* provides a high level overview of the results collected for your area during the 2023 Australian Liveability Census (26th March - 30th June).

Further data, analysis and insights are available, if commissioned, via:

- *Priorities, Values & Performance Report* (Census Partner)
- *Strategic Performance Report* (Strategic Partner)
- *Liveability Platform* (by proposal)

For more information on these options contact LC23@placescore.org.

ABOUT THE 2023 DATA

Data was collected between 26th March and 30th June through our local and state government partners, our corporate and not-for-profit partners, social media campaigns, direct email and on-site field work.

This report includes all data collected for your area and has not been weighted.

2023 PARTNERS

We'd like to thank our 60 partners, including:



2023 Australian Liveability Census

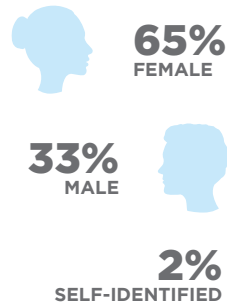
NATIONAL RESULTS

This page provides a snapshot of the key findings. Further analysis is available in the *2023 State of Place* report.

RESPONSES



Community Values	n = 25,870 ¹
Performance	n = 25,830 ²
Population	25,422,788 ³



HOW DO WE COMPARE?

Everyone experiences their neighbourhoods differently.

Seeing community satisfaction with liveability through the eyes of different groups reveals important insights that can maximise social impact and community benefit.

82% ARE SATISFIED WITH LIVEABILITY IN THEIR LOCAL NEIGHBOURHOOD²:

- 82% AGED 15-24
- 80% AGED 25-44
- 82% AGED 45-64
- 85% AGED 65+
- 84% MALE
- 82% FEMALE
- 73% OTHER GENDER

PEOPLE LIVING IN MEDIUM TO HIGH DENSITY HOUSING RATE LIVEABILITY HIGHER THAN THOSE LIVING IN STANDALONE HOUSES²

THOSE BORN OVERSEAS RATE LIVEABILITY THE SAME AS THOSE BORN IN AUSTRALIA²

ABORIGINAL AND TORRES STRAIT ISLANDER PEOPLE RATE LIVEABILITY LOWER THAN AVERAGE²

NOTES

1. The national Community Values (Care Factor, CF) data has a confidence level of 95% ± 0.6%.
2. The national Performance (Place Experience, PX) data has a confidence level of 95% ± 0.3%.
3. Source: ABS 2021 Census.
4. Strength = high value + high performance
Priority = high value + low/mid performance

KEY NATIONAL RESULTS

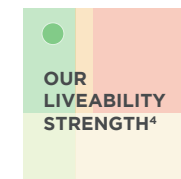


Liveability Performance Australia²

The National Liveability Average is 67 out of 100. Scores for individual local government areas ranged between 53 and 81.

#1
LIVEABILITY PERFORMER AUSTRALIA²

7.7 / 10
Welcoming to all people



We should nurture
Elements of natural environment (natural features, views, vegetation, topography, water, wildlife etc.)

#1
LIVEABILITY VALUE IN AUSTRALIA¹

71% value...
Elements of natural environment (natural features, views, vegetation, topography, water, wildlife etc.)

#50
LIVEABILITY PERFORMER AUSTRALIA²

5.1 / 10
Things to do in the evening (bars, dining, cinema, live music etc.)



We should manage
General condition of public open space (street trees, footpaths, parks etc.)

Your Results

This page provides a snapshot of the key findings for Busselton.

NOTES

1. The local Community Values (Care Factor, CF) data has a confidence level of 95% ± 6.7%.
2. The local Performance (Place Experience, PX) data has a confidence level of 95% ± 3.4%.
3. Source: ABS 2021 Census.
4. Strength = high value + high performance
Priority = high value + low/mid performance

RESPONSES

Responses from across your area



Community Values	n = 214 ¹
Performance	n = 202 ²
Population	40,640 ³

IS LIVEABILITY THE SAME FOR EVERYONE?

Planning for everyone in your community needs a solid foundation that reveals how different people are experiencing their neighbourhoods.

84% ARE SATISFIED WITH LIVEABILITY IN THEIR LOCAL NEIGHBOURHOOD²:

- 83% AGED 25-44**
- 85% AGED 45-64**
- 85% AGED 65+**
- 85% FEMALE**
- 83% MALE**

PEOPLE LIVING IN MEDIUM TO HIGH DENSITY HOUSING RATE LIVEABILITY HIGHER THAN THOSE LIVING IN STANDALONE HOUSES²

THOSE BORN OVERSEAS RATE LIVEABILITY LOWER THAN THOSE BORN IN AUSTRALIA²

KEY RESULTS



Liveability Performance²

Your PX Score out of 100 is comprised of the averaged results of all responses for 50 neighbourhood place attributes in your area.

#1
LIVEABILITY PERFORMER²

8.2 / 10

Elements of natural environment (natural features, views, vegetation, topography, water, wildlife etc.)



You should nurture

Elements of natural environment (natural features, views, vegetation, topography, water, wildlife etc.)



78% value...

Elements of natural environment (natural features, views, vegetation, topography, water, wildlife etc.)

#50
LIVEABILITY PERFORMER²

5.1 / 10

Unusual or unique buildings and/or public space design

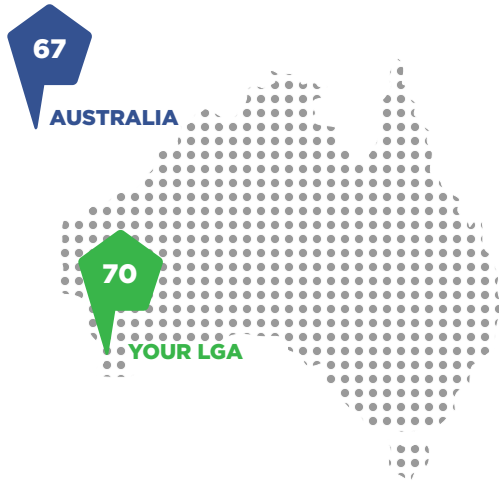


You should manage

Protection of the natural environment

NOTES

- 1. The local Performance (Place Experience, PX) data has a confidence level of 95% ± 3.4%.
- 2. The national Performance (Place Experience, PX) data has a confidence level of 95% ± 0.3%.



LIVEABILITY PERFORMANCE

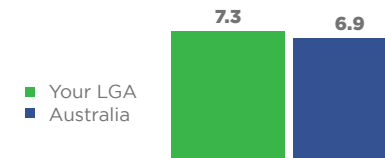
Place Score invited people in your community to assess the liveability of their own neighbourhoods by rating 50 Place Attributes¹. These Place Attributes cover a broad range of themes: open space, movement, local character, economy and more.

Some neighbourhoods may perform well in one theme but less well in others. National² comparison data is shown here for three themes (Movement, Community, Management and Safety), encompassing 19 Place Attributes.



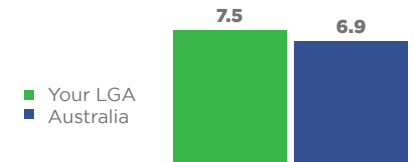
MOVEMENT

Relates to the movement of people and goods and connectivity.



COMMUNITY

Relates to people's identity, how they express that identity, and how they interact and define the broader community.



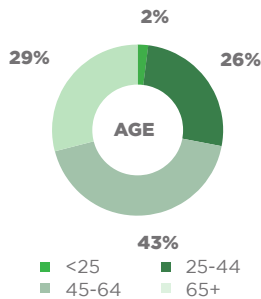
MANAGEMENT AND SAFETY

Relates to the management of an area and its users feelings of safety.

ABOUT YOUR RESPONDENTS



0% SELF-IDENTIFIED



NET PROMOTER SCORE¹

How likely is your community to recommend your LGA?

NPS is a universal measure of community loyalty. The difference between the percentage of Promoters and Detractors results in a NPS between -100 and +100.



PROMOTERS
51%

PASSIVES
37%

DETRACTORS
12%

NOTES

- Care Factor rank where #1 is most valued and #50 is least valued.
- Place Experience Score out of 10.

CELEBRATE YOUR STRENGTHS

Liveability Strengths are Place Attributes that are valued by most people in your community, and which are performing well.

Liveability Priorities are Place Attributes that are valued by most people in your community, however, their performance is impacting them negatively.

Build on strengths and improve priorities - invest where there will be most community benefit.

TOP 3 LIVEABILITY STRENGTHS

CF# ¹	STRENGTHS	PX ²
1	Elements of natural environment (natural features, views, vegetation, topography, water, wildlife etc.)	8.2
2	Sense of neighbourhood safety (from crime, traffic, pollution etc.)	7.4
3a	General condition of public open space (street trees, footpaths, parks etc.)	7.5

TOP 2 LIVEABILITY PRIORITIES

CF# ¹	PRIORITIES	PX ²
3b	Protection of the natural environment	6.6
15b	Sustainable behaviours in the community (water management, solar panels, recycling etc.)	6.7

YOUR COMPETITIVE ADVANTAGE

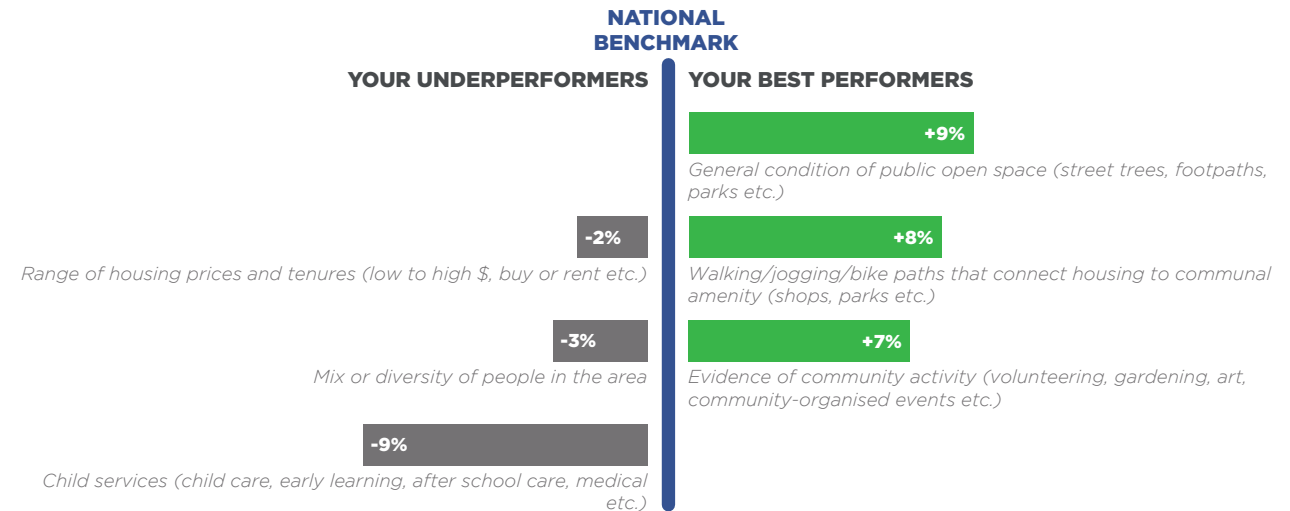
Every place has something that already is, or can be built into, a competitive advantage.

Your best performers are opportunities to distinguish your LGA from the pack. Consideration should be given to who values these attributes and how you can attract them to your area.

Underperformers can reveal your weaknesses but may not necessarily be priorities - if your community, or the segment you are trying to attract, does not value them.

NATIONAL BENCHMARK COMPARISON

This graph compares the performance of your LGA with Place Score's National Benchmark.



Busselton

West Australia

HOW DO YOU COMPARE?

Understanding your strengths and weaknesses compared to the National Benchmark can help you plan to build on your competitive advantage or improve areas that are underperforming.

PX SCORES



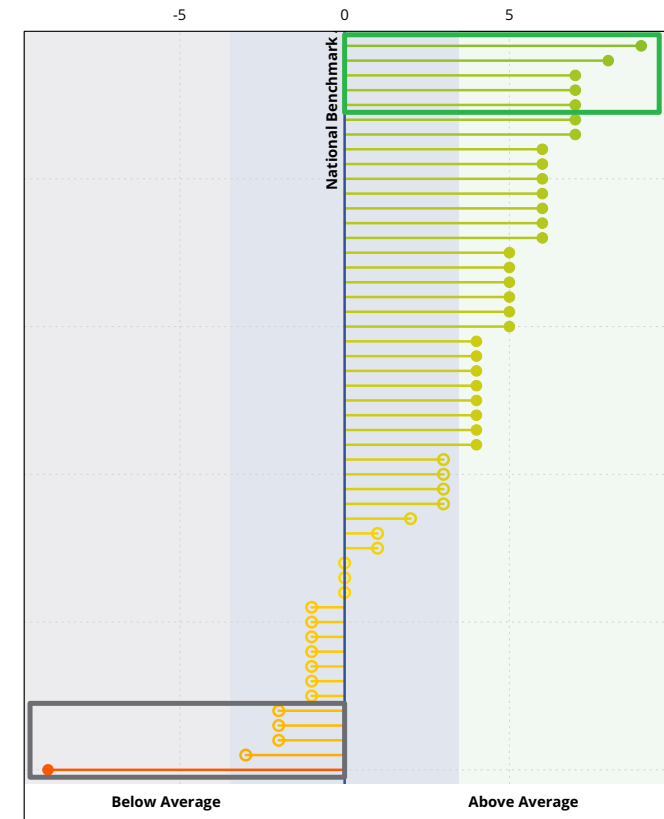
BEST AND UNDERPERFORMING ATTRIBUTES¹

TOP 5 ATTRIBUTES COMPARED TO THE NATIONAL BENCHMARK	VS NATIONAL BENCHMARK
General condition of public open space (street trees, footpaths, parks etc.)	9%
Walking/jogging/bike paths that connect housing to communal amenity (shops, parks etc.)	8%
Evidence of community activity (volunteering, gardening, art, community-organised events etc.)	7%
Landmarks, special features or meeting places	7%
Sense of connection to/feeling support from neighbours or community	7%

BOTTOM 5 ATTRIBUTES COMPARED TO THE NATIONAL BENCHMARK	VS NATIONAL BENCHMARK
Child services (child care, early learning, after school care, medical etc.)	-9%
Mix or diversity of people in the area	-3%
Range of housing prices and tenures (low to high \$, buy or rent etc.)	-2%
Access to neighbourhood amenities (cafes, shops, health and wellness services etc.)	-2%
Local businesses that provide for daily needs (grocery stores, pharmacy, banks etc.)	-2%

NOTES

1. The blue area in the graph represents the margin of error. The attributes in this area could be lower, higher or the same as the National Benchmark.



Busselton

West Australia

HIGH IMPACT INVESTMENT

Build on, and improve local liveability by investing in what matters to your community. By understanding what your community values and how they rate the performance of each Place Attribute, you can preserve what is working well and recommend the areas for investment that will bring the most benefits to your community.

These tables and graph illustrate your LGA's strengths and priorities.

NURTURE

These attributes are the strongest contributors to liveability because a significant proportion of your community values them and rated them positively. Consider how to strengthen them, and protect them from potential threats.

PRIORITISE

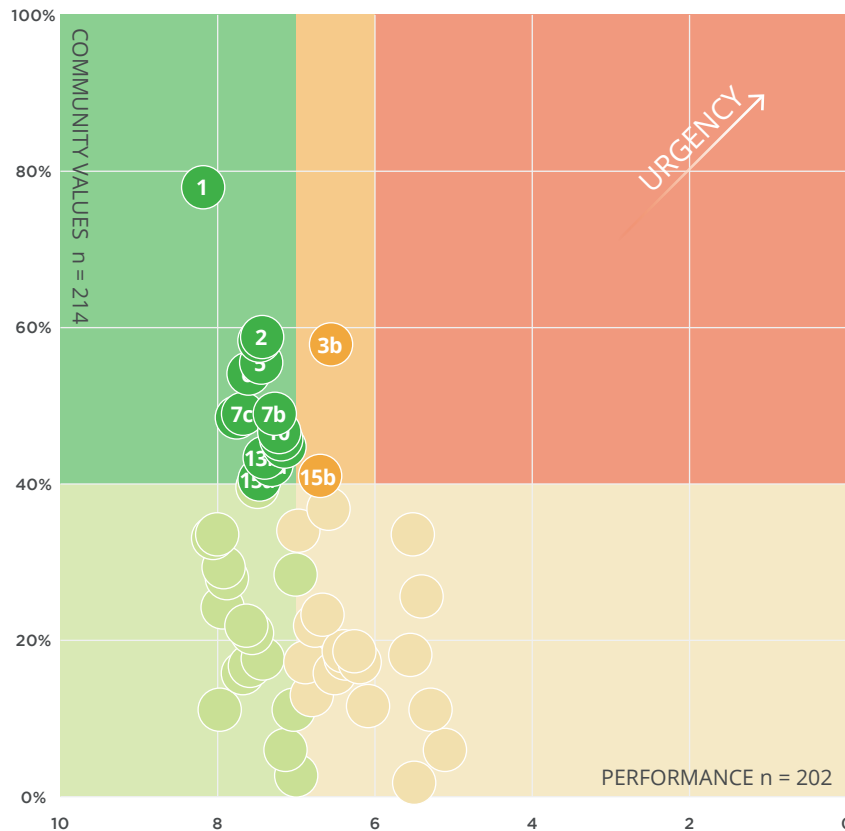
Increase the performance of these attributes to deliver the biggest benefit to your community. They identify aspects of your neighbourhood that are important to most people, but are currently underperforming.

MANAGE

Not quite an emergency but not performing as well as they could. Increase investment to make them great contributors to local liveability, or maintain the current level of investment to prevent future problems.

LEGEND

- Nurture (CF ≥ 40%, PX ≥ 7)
- Prioritise (CF ≥ 40%, PX < 6)
- Manage (CF ≥ 40%, 6 ≤ PX < 7)
- Monitor (CF < 40%, PX ≥ 7)
- Maintain (CF < 40%, PX < 7)



CF#	NURTURE
1	Elements of natural environment (natural features, views, vegetation, topography, water, wildlife etc.)
2	Sense of neighbourhood safety (from crime, traffic, pollution etc.)
3 ^a	General condition of public open space (street trees, footpaths, parks etc.)
5	Landscaping and natural elements (street trees, planting, water features etc.)
6	Sense of belonging in the community
7 ^b	Access and safety of walking, cycling and/or public transport (signage, paths, lighting etc.)
10	Quality of public space (footpaths, verges, parks etc.)
11	Access to neighbourhood amenities (cafes, shops, health and wellness services etc.)
12	Locally owned and operated businesses
7 ^c	Walking/jogging/bike paths that connect housing to communal amenity (shops, parks etc.)
7 ^a	Sense of personal safety (for all ages, genders, day or night)
13 ^b	Spaces suitable for specific activities or special interests (entertainment, exercise, dog park, BBQs etc.)
13 ^a	Local businesses that provide for daily needs (grocery stores, pharmacy, banks etc.)
15 ^a	Amount of public space (footpaths, verges, parks etc.)

CF#	MANAGE
3 ^b	Protection of the natural environment
15 ^b	Sustainable behaviours in the community (water management, solar panels, recycling etc.)

ACCESS ALL YOUR DATA

To access all your results, nine themes, along with detailed performance and priorities data, contact Place Score to unlock your *Liveability Platform*, an online tool for your whole organisation.

